

# MONTHLY MEMBERSHIP PROGRESS REPORT

LOCATION PHILIPPINES

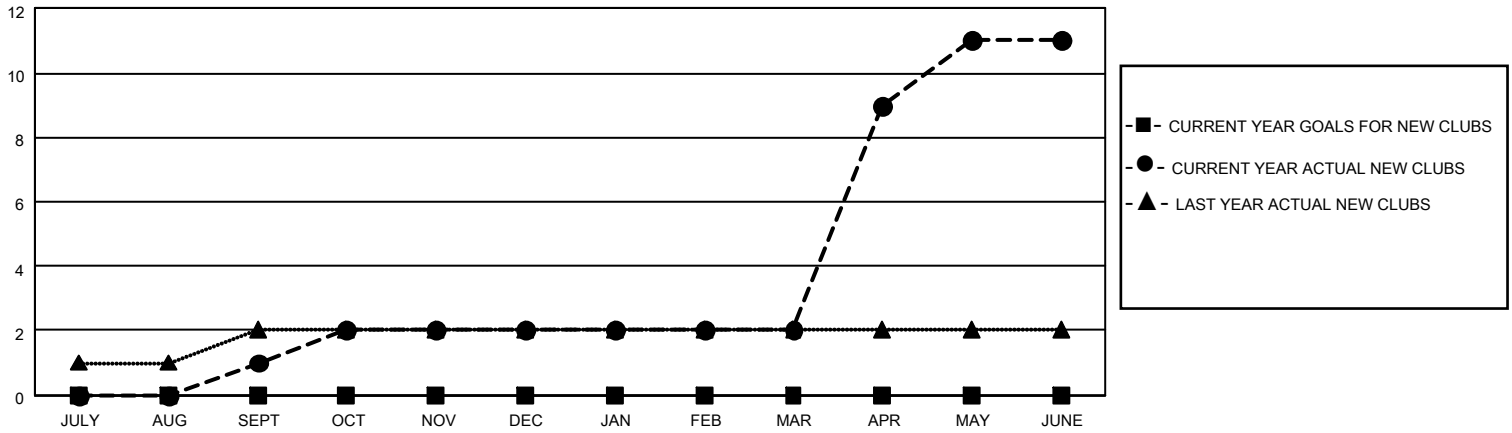
District 301D1

Results as of: 6/30/2023

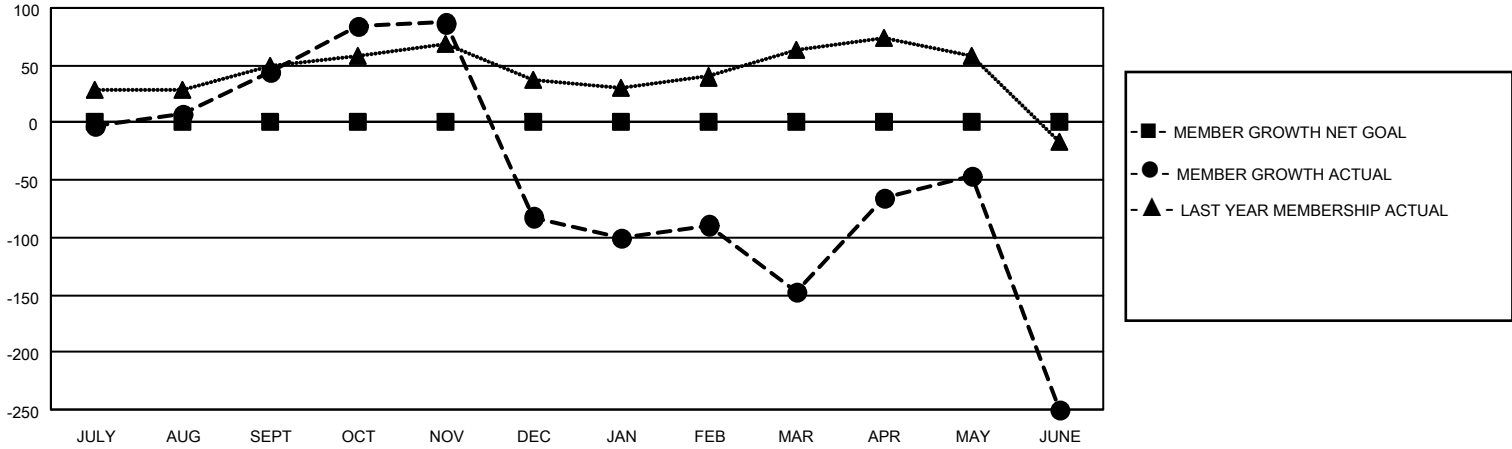
| Clubs                 |               |           |               |
|-----------------------|---------------|-----------|---------------|
| RESULTS FOR 2022-2023 |               |           |               |
| QUARTER               | NEW CLUB GOAL | NEW CLUBS | DROPPED CLUBS |
| JULY/AUG/SEPT         | 0             | 1         | 1             |
| OCT/NOV/DEC           | 0             | 1         | 1             |
| JAN/FEB/MAR           | 0             | 0         | 2             |
| APR/MAY/JUNE          | 0             | 9         | 0             |

| Members               |                        |                      |  |
|-----------------------|------------------------|----------------------|--|
| RESULTS FOR 2022-2023 |                        |                      |  |
| QUARTER               | MEMBER GROWTH NET GOAL | MEMBER GROWTH ACTUAL | DROPPED MEMBERS ACTUAL (including transfers) |
| JULY/AUG/SEPT         | 0                      | 97                   | 43   |
| OCT/NOV/DEC           | 0                      | 91                   | 214  |
| JAN/FEB/MAR           | 0                      | 72                   | 117  |
| APR/MAY/JUNE          | 0                      | 388                  | 364  |

**GOALS AND ACTUAL NEW CLUBS CUMULATIVE**



**GOALS AND ACTUAL MEMBERS CUMULATIVE**



**DROPPED CLUBS: 4**

**43 CLUBS OF 60 ADDED 1 OR MORE NEW MEMBERS**

**GENDER DISTRIBUTION**

|                      |              |
|----------------------|--------------|
| MALE                 | 751 (47.53%) |
| FEMALE               | 826 (52.28%) |
| NON BINARY           | 0 (0.00%)    |
| PREFER NOT TO ANSWER | 3 (0.19%)    |

**DROPPED MEMBERS**

[CLICK HERE FOR CUMULATIVE MEMBERSHIP DATA](#)

|                |            |
|----------------|------------|
| DECEASED       | 13         |
| CLUB CANCELLED | 234        |
| OTHER          | 491        |
| <b>TOTAL</b>   | <b>738</b> |

TOTAL FAMILY UNIT MEMBERS 646

FAMILY MEMBERS PAYING HALF DUES 400